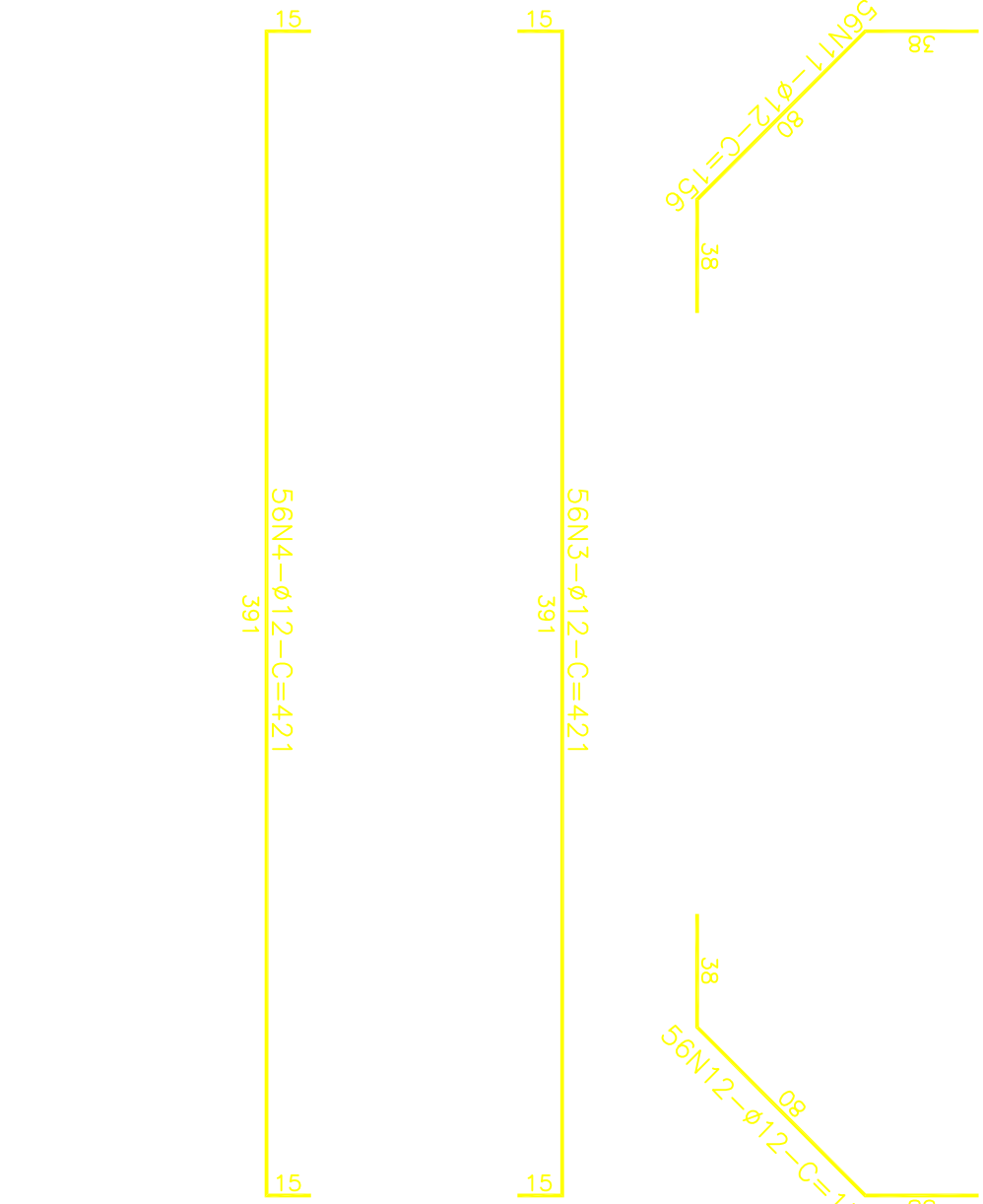
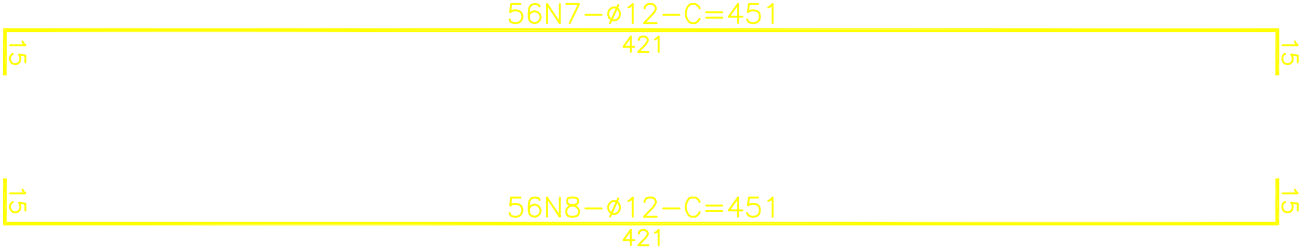
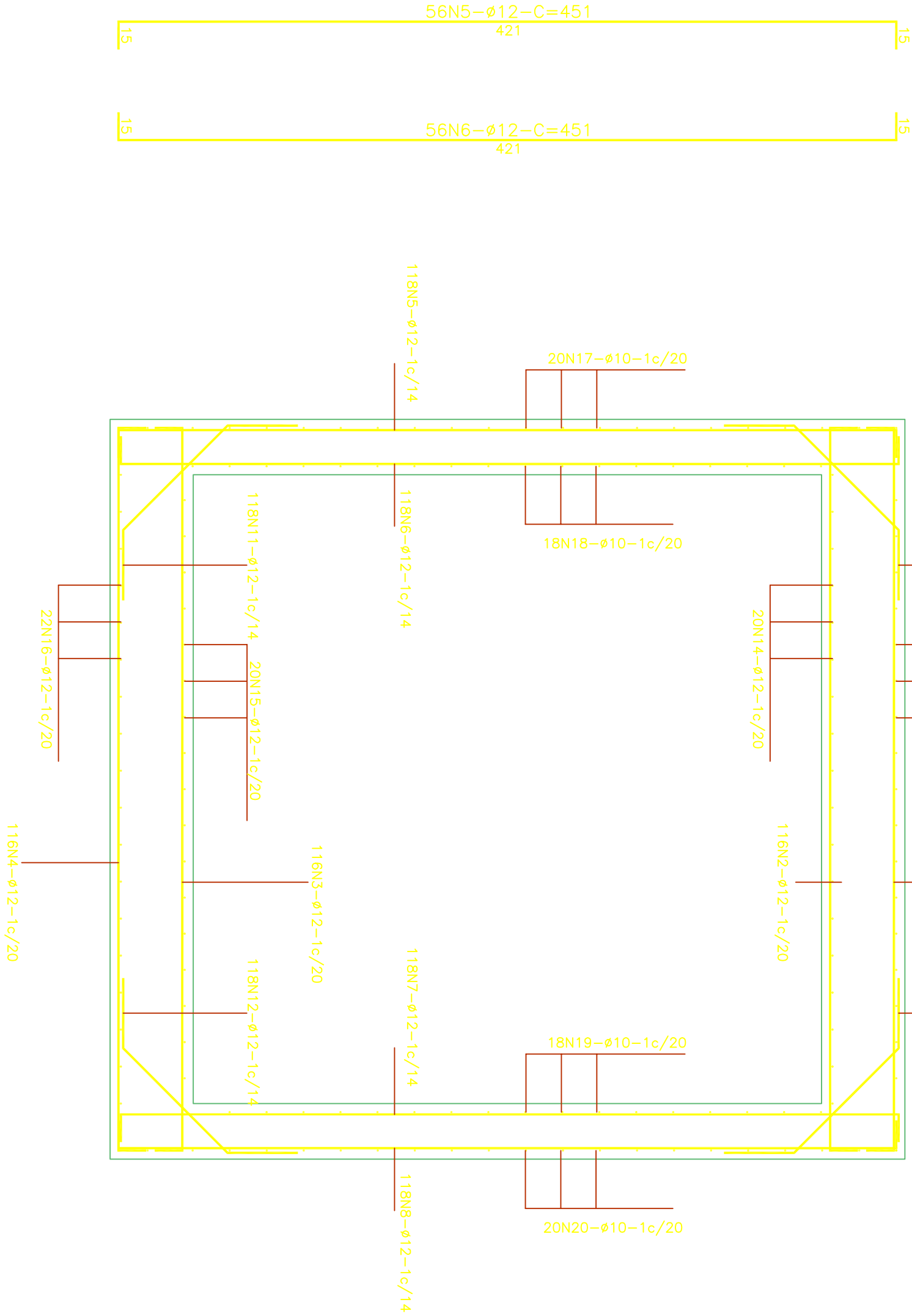
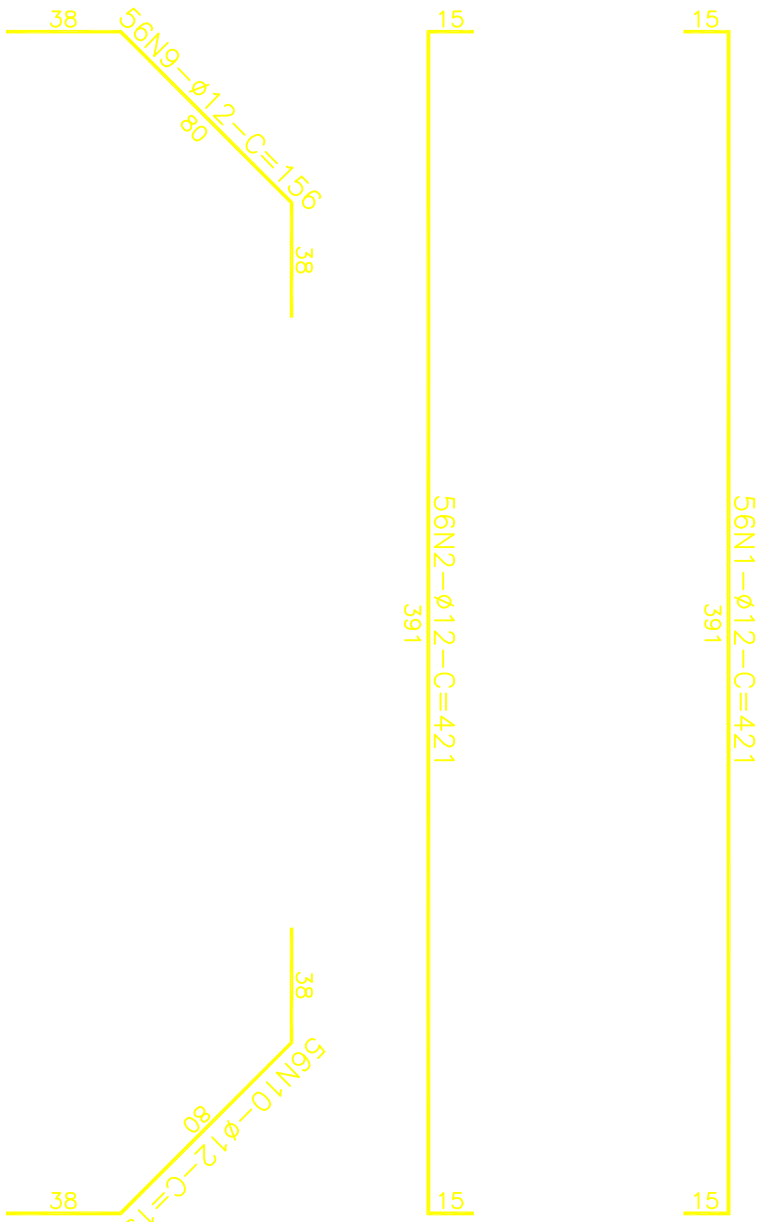


COTOVELO 04



ARMADURAS

ESC: 1/25

ARMADURAS - PLANTA

ESC: 1/50

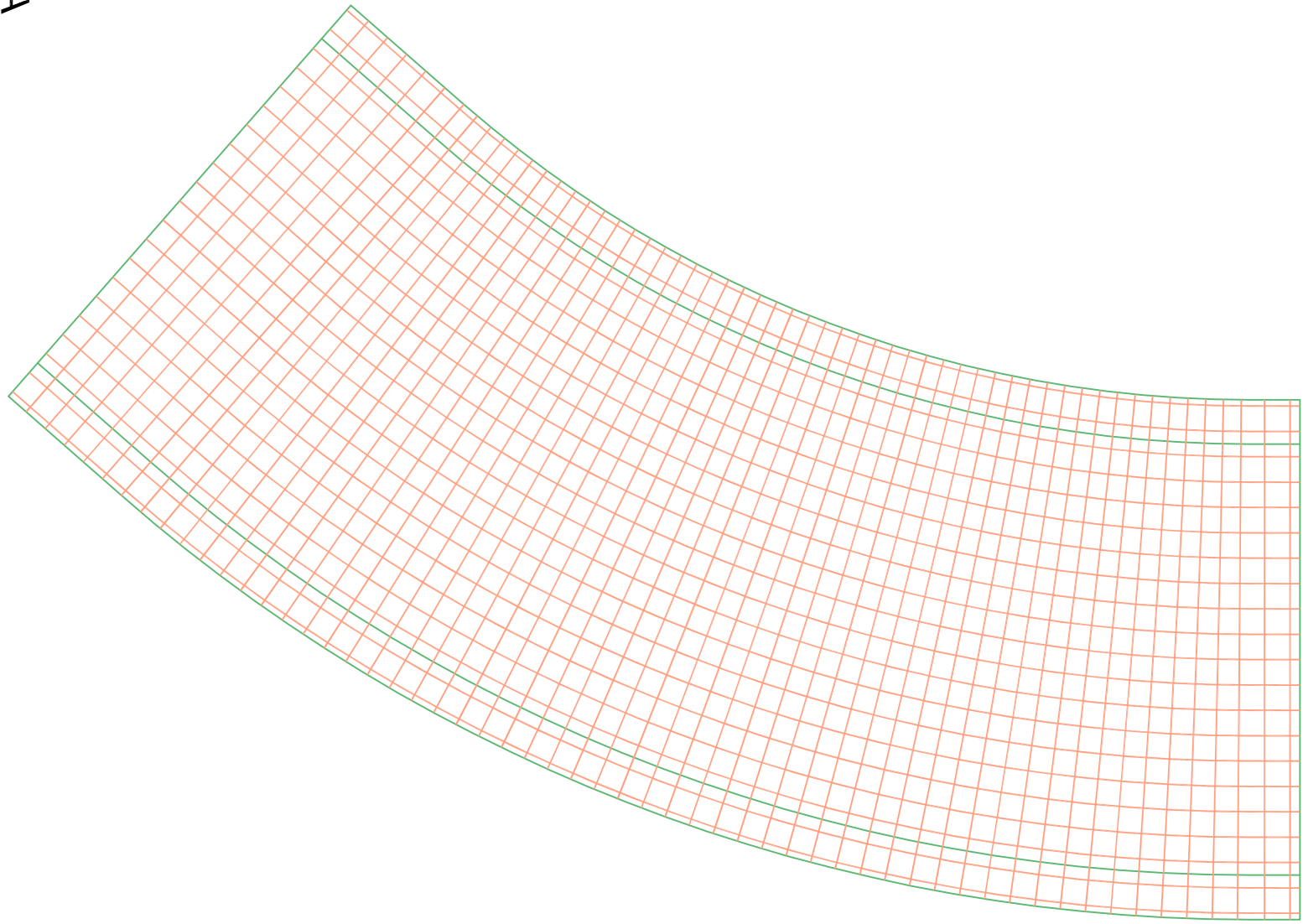


TABELA DE CORTE

N	QUANT	Ø	C. UNIT	C. TOTAL
1	56	12	421	23576
2	56	12	421	23576
3	56	12	421	23576
4	56	12	421	23576
5	56	12	451	25256
6	56	12	451	25256
7	56	12	451	25256
8	56	12	451	25256
9	56	12	156	8736
10	56	12	156	8736
11	56	12	156	8736
12	56	12	156	8736
13	22	12	982	21604
14	20	12	982	19640
15	20	12	982	19640
16	22	12	982	21604
17	20	12	838	16760
18	22	12	838	18436
19	20	19	1126	22520
20	22	12	1126	24772

RESUMO DO AÇO

DIAM	COMP	PESO
12	372728	3509
19	22520	501
TOTAL :		3610
TOTAL +10%		4191

15					
14					
13					
12					
11					
10					
9					
8					
7					
6	REVISÃO GERAL				
5					
4					
3					
2					
1					

REVISÕES

ESPAÇO RESERVADO A P.M.L.

PROJETO EXECUTIVO DE ENGENHARIA
AMPLIAÇÃO DA CAPACIDADE HIDRÁULICA DO RIO MATIAS
PREFEITURA MUNICIPAL DE JOINVILLE
SECRETARIA DE ADMINISTRAÇÃO

TÍTULO:	ARMADURAS	PRONCHÃO
CONTEÚDO:	GALERIA DE CONDUÇÃO - COTOVELOS - ARMADURAS	
COORDENADOR:	EDU JOSÉ FRANCO	ENG. CIVIL
AUTOR:	EDMILSON DE SOUZA	ENG. CIVIL
PROJETO:	engenharia consultiva	ARC-06
REVISÃO:	123	de 16
DATA DE CONTRATO:	05/2013	